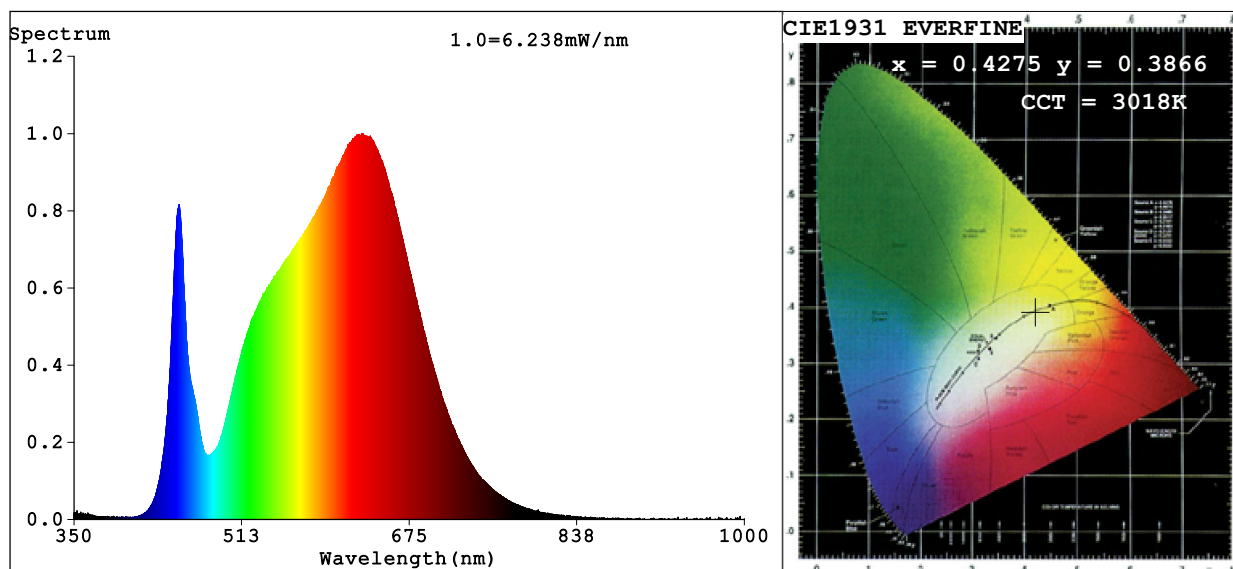


Spectrum Test Report



Color Parameters:

Chromaticity Coordinate: $x=0.4275$ $y=0.3866$ $u'=0.2521$ $v'=0.5129$

CCT=3018K (Duv=-0.0058) Dominant WL:Ld =585.1nm Purity=44.4%

Ratio:R=24.5% G=72.9% B=2.6%; Peak WL:Lp=629.6nm FWHM=167.8nm

Render Index:Ra=93.0 CRI=90.4 TM30:Rf=87 Rg=105

R1 =95 R2 =96 R3 =93 R4 =92 R5 =94 R6 =92 R7 =93

R8 =89 R9 =75 R10=87 R11=91 R12=76 R13=95 R14=95 R15=95

Photo Parameters:

Flux = 306.8 lm Eff. : 30.55 lm/W Fe = 1.128 W

Electrical parameters:

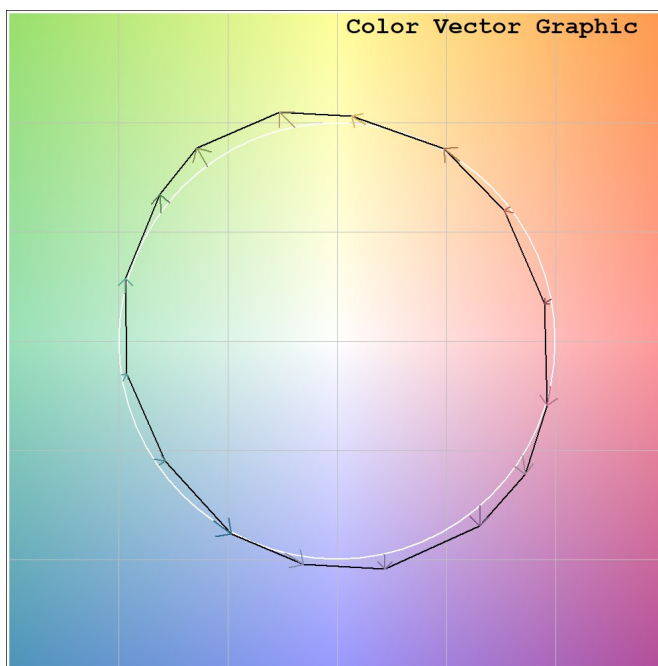
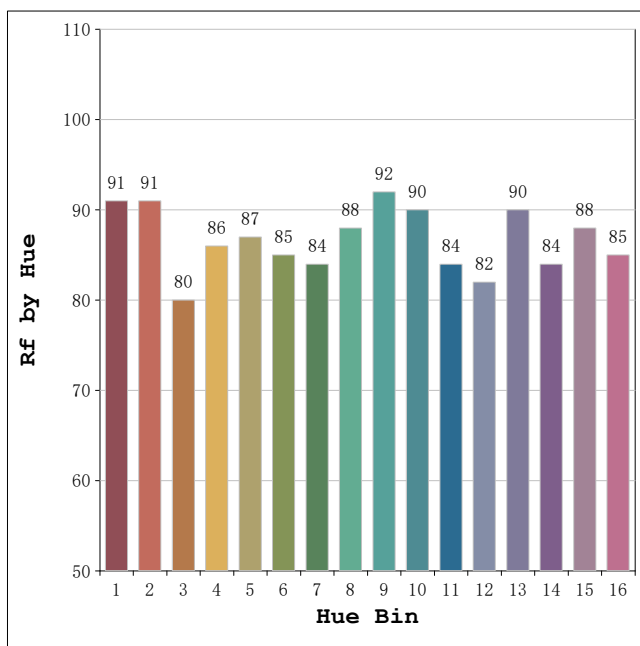
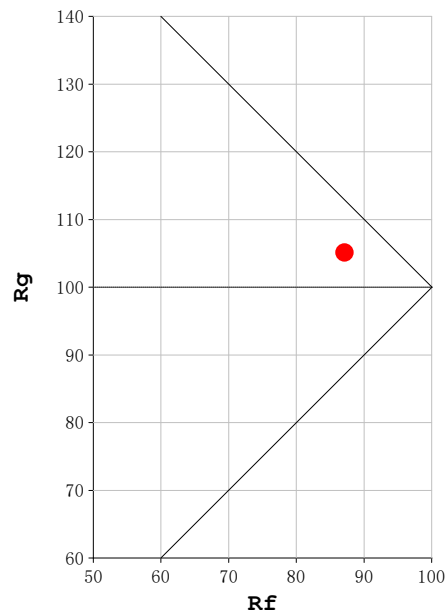
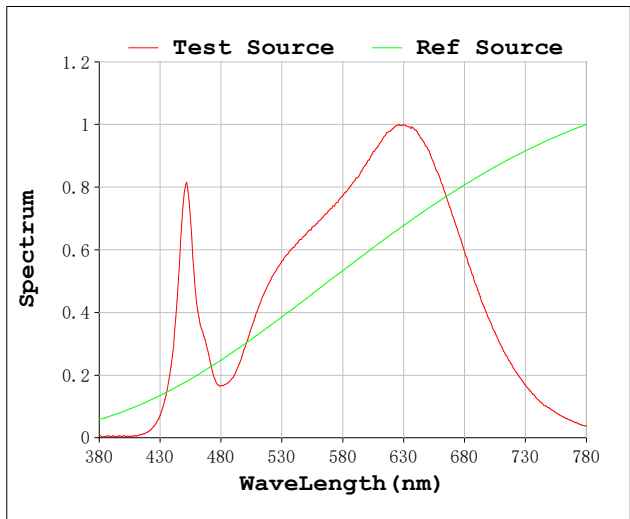
V = 23.998 V I = 0.4184 A P = 10.04 W PF = 1.000

Status: Integral T = 4293 ms Ip = 48575 (74%)

Model:Ecoled Neón Dakar 3000
Tester:Sergio Carneros
Temperature:27Deg
Manufacturer:Luz Negra S.L

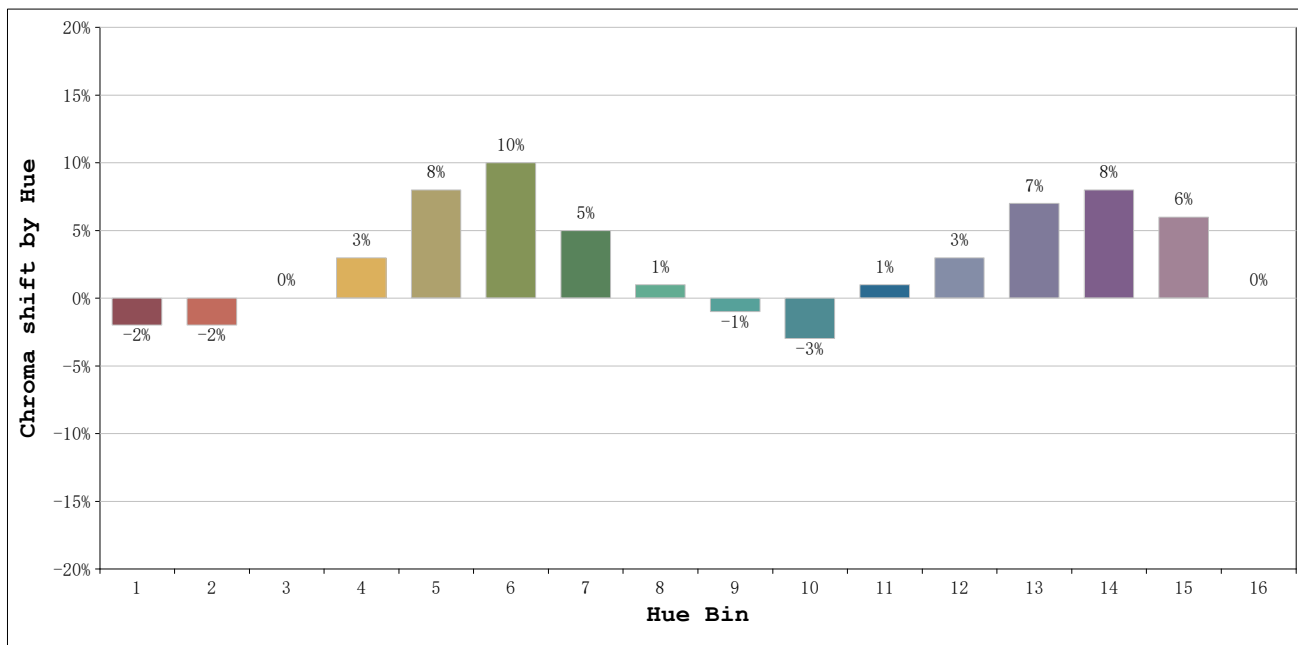
Number: 10.273
Date:2025-03-24 11:58:34
Humidity:40%
Remarks:100cm de tira flexible

Rf: 87 **CCT: 3018 K** **u': 0.2521**
Rg: 105 **Duv: -0.0058** **v': 0.5129**



Model:Ecoled Neón Dakar 3000
 Tester:Sergio Carneros
 Temperature:27Deg
 Manufacturer:Luz Negra S.L

Number: 10.273
 Date:2025-03-24 11:58:34
 Humidity:40%
 Remarks:100cm de tira flexible



			Graphic shift(%)	
Hue Bin	Hue Angle	Rf	Chroma	Hue
1	0.0° - 22.5°	91	-2	-1
2	22.5° - 45.0°	91	-2	4
3	45.0° - 67.5°	80	0	9
4	67.5° - 90.0°	86	3	7
5	90.0° - 112.5°	87	8	6
6	112.5° - 135.0°	85	10	0
7	135.0° - 157.5°	84	5	-6
8	157.5° - 180.0°	88	1	-6
9	180.0° - 202.5°	92	-1	-2
10	202.5° - 225.0°	90	-3	4
11	225.0° - 247.5°	84	1	10
12	247.5° - 270.0°	82	3	9
13	270.0° - 292.5°	90	7	0
14	292.5° - 315.0°	84	8	-4
15	315.0° - 337.5°	88	6	-6
16	337.5° - 360.0°	85	0	-8

Model:Ecoled Neón Dakar 3000
 Tester:Sergio Carneros
 Temperature:27Deg
 Manufacturer:Luz Negra S.L

Number: 10.273
 Date:2025-03-24 11:58:34
 Humidity:40%
 Remarks:100cm de tira flexible